

# **VISIBLE LIGHT EMITTING DIODE**

## **DATA SHEET**

**MODEL NO: GT5-9R07D01L**

**REV. : 2.0**

---

**DATE : 11-MAY-2009**

---

■ DESCRIPTIONS:

- 5mm Round lamp
- Lens color: Red Diffused
- Emitting Color: Bright Red
- No Stopper
- Dice Material: GaP



■ APPLICATIONS:

- TV set
- Monitor
- Telephone
- Computer
- circuit board

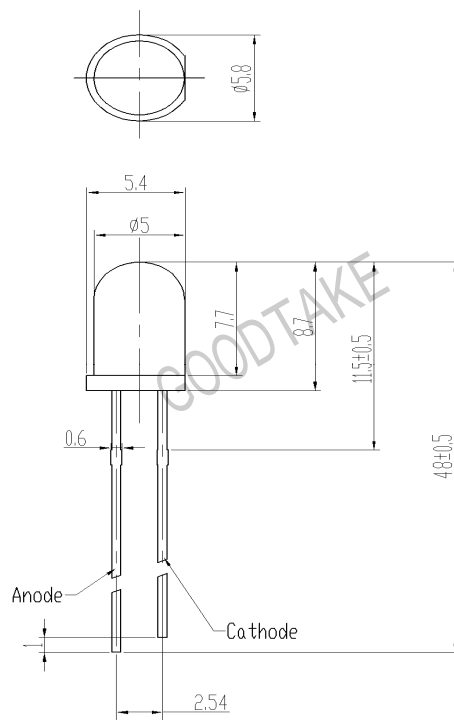
■ ABSOLUTE MAXIMUM RATINGS (Tamb=25,unless otherwise specified)

Parameter	Test condition	Symbol	Ratings	Unit
Forward Current		IF	20	mA
Power Dissipation		PD	50	mW
Peak Forward Current	tp/T=0.1, tp=100μs	IFP	100	mA
Reverse voltage		VR	5	V
Operating Temperature		Topr	-40~+85	°C
Storage Temperature		Tstg	-40~+100	°C
Soldering Temperature		Tsol	260°C for 5 sec Max (2mm from Body)	

## Basic Characteristics (Tamb=25, unless otherwise specified)

Parameter	Symbol	Min.	Type	Max.	Unit	Test Condition
Forward Voltage	VF		1.9	2.5	V	IF=20mA
Luminous Intensity	Iv	80		200	mcd	IF=20mA
Reverse Current	IR			10	μA	VR=5V
Peak Wavelength	λp		640	645	nm	IF=20mA
Dominant Wavelength	λp	650			nm	IF=20mA
View Angle	2θ1/2		20		deg	IF=20mA

### ● Dimensions:



- NOTE:** 1. All dimensions are in millimeter, tolerance is ±0.5 unless otherwise noted.  
 2. Epoxy meniscus extends ≤1 mm down to the lead is allowed.

## Typical electro-optical characteristics curves

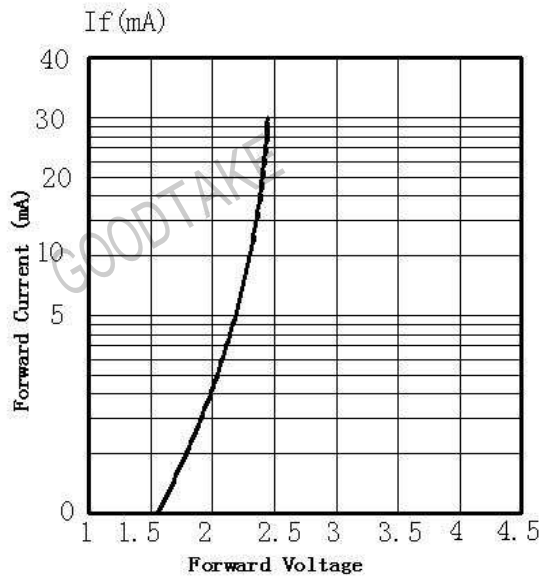


Fig. 1 forward Current vs. Forward Voltage

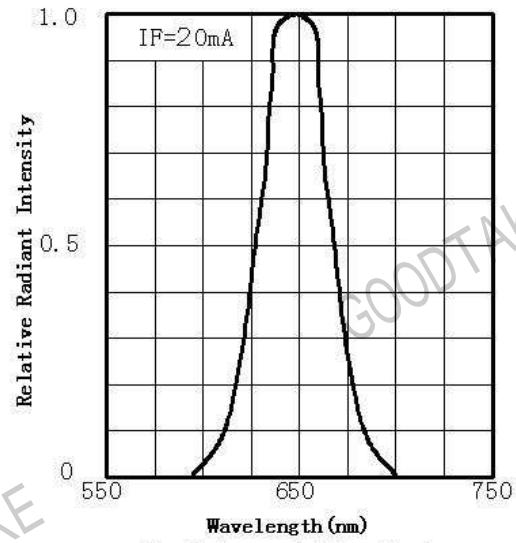


Fig. 2 Spectral Distribution

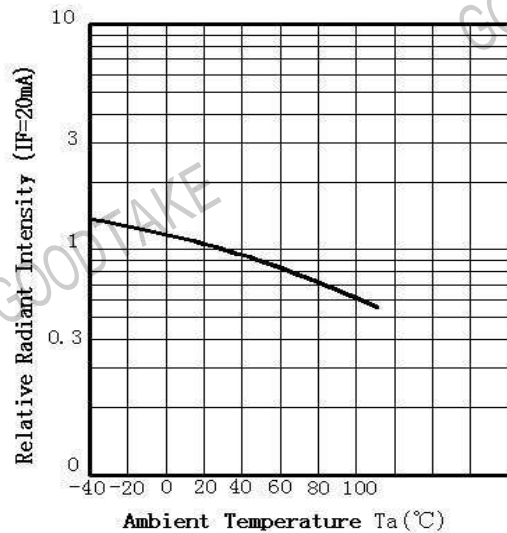


Fig. 3 Ambient Radiant Intensity Vs Ambient Temperature

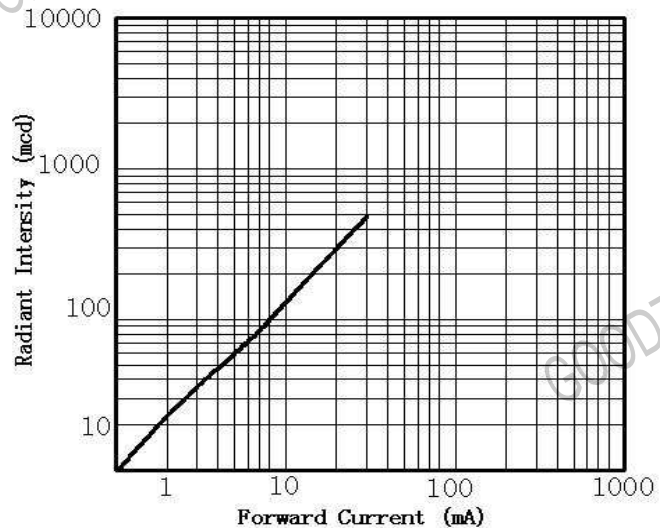


Fig. 4 Forward Current Vs Radiant Intensity

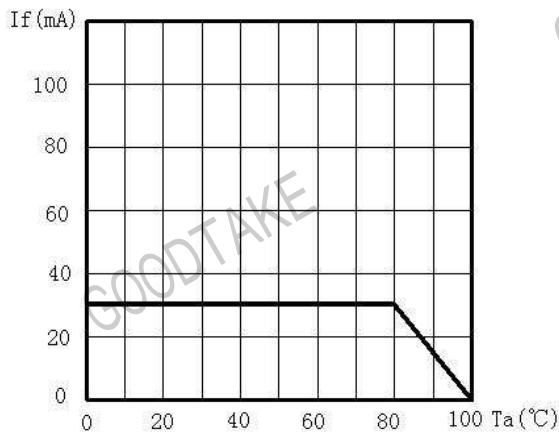


Fig. 5 Maximum Forward Current Vs Ambient Temperature

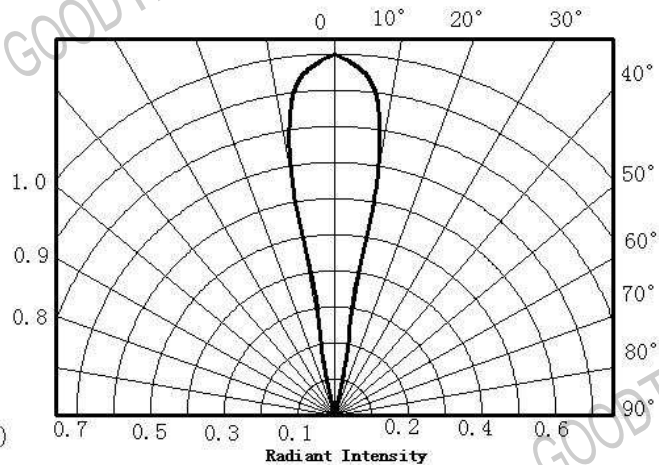


Fig. 6 Angle Vs Radiant Intensity