

VISIBLE LIGHT EMITTING DIODE

DATA SHEET

MODEL NO: GT5A-5RG07W0112G

REV. : 2.0

DATE : 11-MAY.-2009

■ DESCRIPTIONS:

- 5mm Round lamp
- Lens color: White Diffused
- Emitting Color: Red and Green
- No Stopper
- Dice Material: Red GaP
Green GaP



■ APPLICATIONS:

- TV set
- Monitor
- Telephone
- Computer
- circuit board

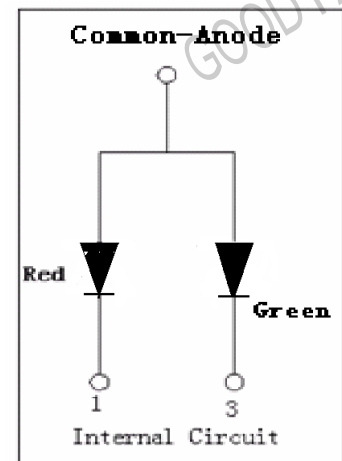
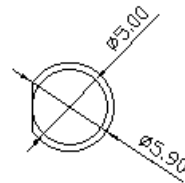
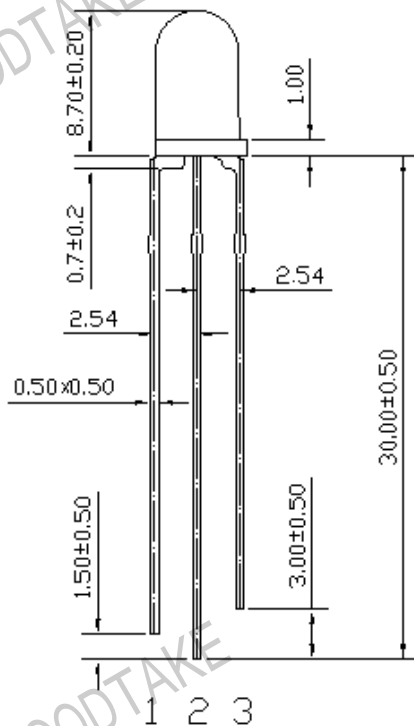
■ ABSOLUTE MAXIMUM RATINGS (Tamb=25,unless otherwise specified)

Parameter	Test condition	Symbol	Ratings	Unit
Forward Current		IF	20	mA
Power Dissipation		PD	80	mW
Peak Forward Current	tp/T=0.1, tp=100μs	IFP	100	mA
Reverse voltage		VR	5	V
Operating Temperature		Topr	-40~+85	°C
Storage Temperature		Tstg	-40~+100	°C
Soldering Temperature		Tsol	260°C for 5 sec Max (2mm from Body)	

Basic Characteristics (Tamb=25, unless otherwise specified)

Parameter	Symbol		Min.	Type	Max.	Unit	Test Condition
Forward Voltage	VF	Red		2.0	2.8	V	IF=20mA
		Green		2.2	2.6		
Luminous Intensity	Iv	Red		120	170	mcd	IF=20mA
		Green		75	100		
Reverse Current	IR				80	μA	VR=5V
Peak Wavelength	λp	Red		640	645	nm	IF=20mA
		Green		565	570		
Dominant Wavelength	λp		630			nm	IF=20mA
			565				
View Angle	2θ1/2	Red		50		deg	IF=20mA
		Green	ε	50			

● Dimensions:



- NOTE:**
1. All dimensions are in millimeter, tolerance is ± 0.5 unless otherwise noted.
 2. Epoxy meniscus extends ≤ 1 mm down to the lead is allowed.

■ Typical electro-optical characteristics curves

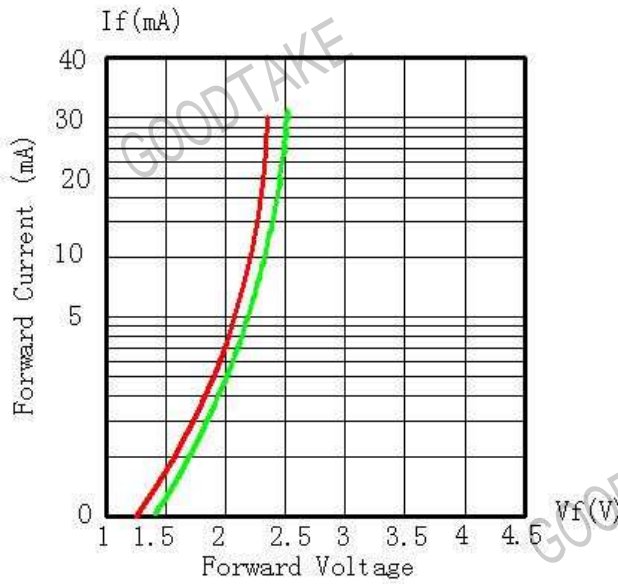


Fig.1 forward Current vs. Forward Voltage

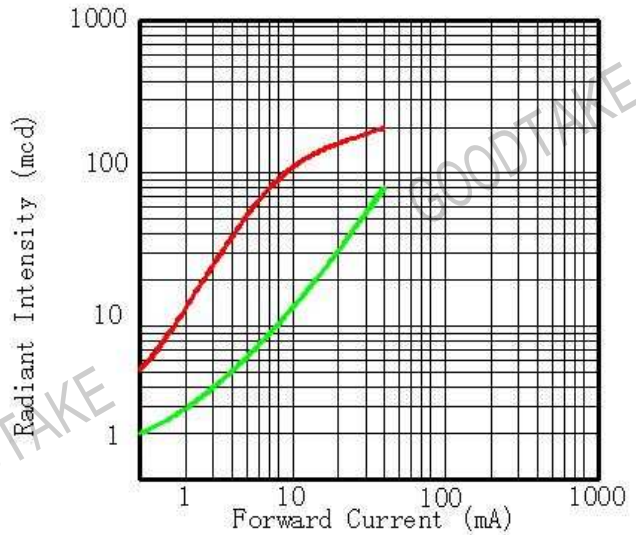


Fig.2 Forward Current Vs Radiant Intensity

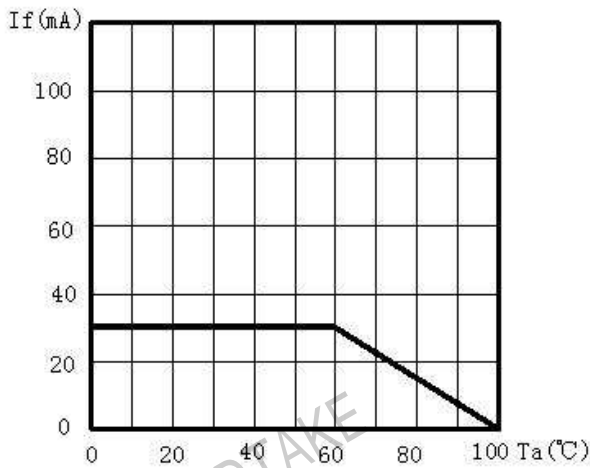


Fig.3 Maximum Forward Current Vs Ambient Temperature

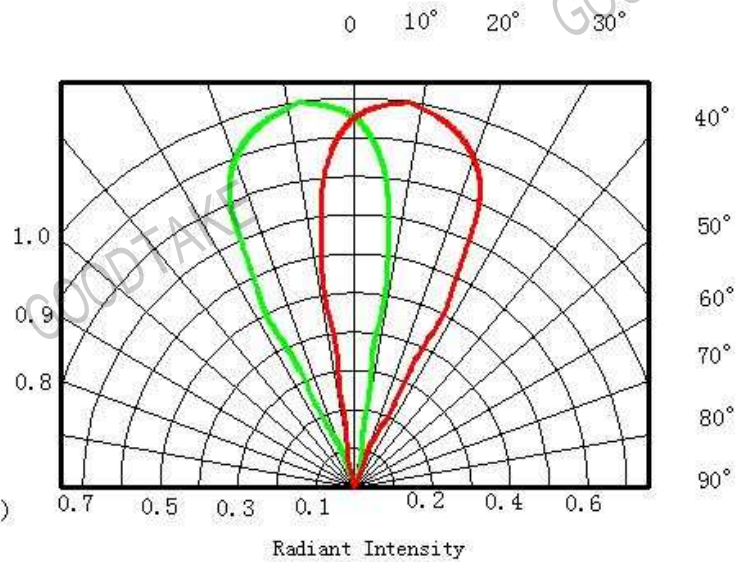


Fig.4 Angle Vs Radiant Intensity