

Features

- 0.56 inch(14.2mm)Digit Height
- Continuous uniform segments
- Low power requirement
- Excellent characters appearance
- Wide viewing angle
- Solid state reliability

Description

The GT-20562WH-3B is a 0.56 (14.2mm) digit height

2 digit seven-segment with several icons display.

This device is multi-color applicable display,it uses

BRIGHT-RED LED chipcs.

The display has a red face and white segments.

Device

Part no.	Description
RED	Multiplex Common Cathode
GT-20562WH-3B	

PIN CONNECTION

NO	CONNECTION
1	ANODE G
2	ANODE DP
3	ANODE A
4	ANODE F
5	COMMON CATHODE DIG2
6	ANODE D
7	ANODE E
8	ANODE C
9	ANODE B
10	COMMON CATHODE DIG1

TYPE: GT-20562WH-3B

SIZE: 25.0mm × 19.0mm × 8.0mm

Absolute Maximum Ratings

Parameter	Symbol	Ratings
Peak Forward current per Dice (Duty cycle 1/10.10KHZ)	I _{pf}	100mA
Continuous Forward current per Dice	I _f	25 mA
Reverse Voltage	V _R	5V
Operating Temperature	T _{opr}	-25to+85°C
Storage temperature	T _{stg}	-25to+85°C
Soldering Temperature: 1/16Inch below seating place for 5 seconds		260°C

Electro-Optical Characteristics:

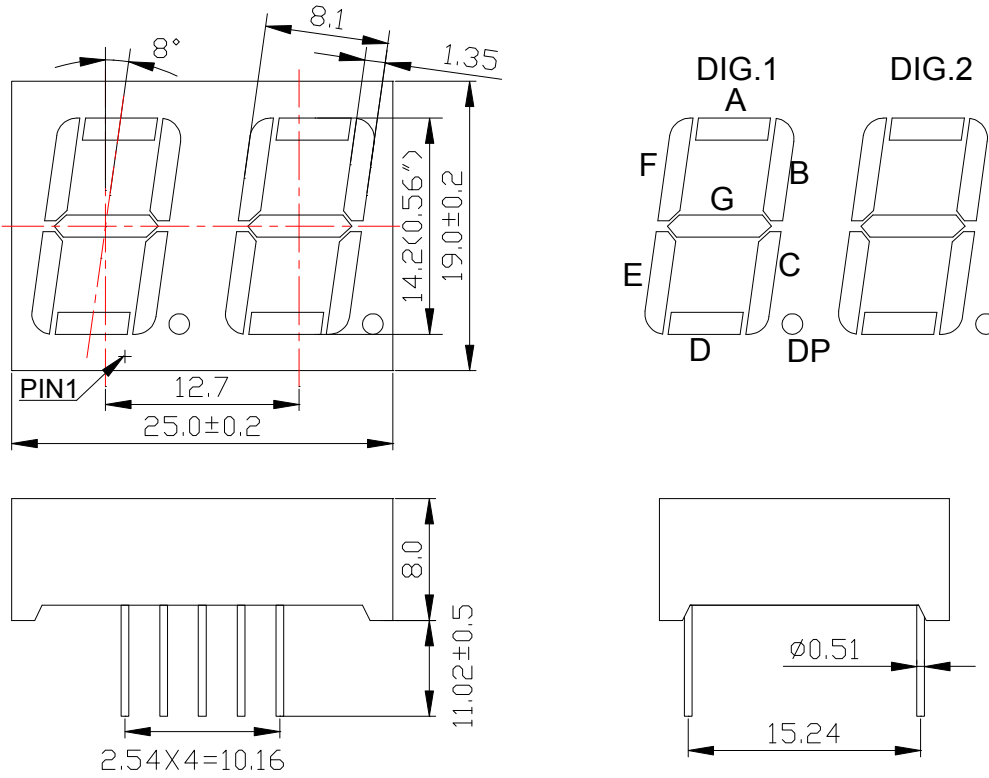
Parameter	Symbol	Condition	Typ.	Max.	Unit
Forward Voltage	V _F	I _F =20mA	1.85	2.1	V
Reverse Current	I _R	V _R =5V	---	50	uA
Luminous Intensity	I _V	I _F =20mA	20	---	mcd
Peak Emission Wavelength	λ _P	I _F =20mA	643	645	nm
Spectrum width of Half Value	Δλ	I _F =20mA	20	---	nm

Recommend: It should be drive by stable current

TYPE: GT-20562WH-3B

SIZE: 25.0mm × 19.0mm × 8.0mm

Package Dimension (Unit:mm)



Internal Circuit Diagram

